



Meeting	Local Plan Advisory Group
Date and Time	Wednesday, 8th March, 2023 at 6.00 pm.
Venue	This meeting will be held virtually and will be streamed live on YouTube at <a href="http://www.youtube.com/winchestercc">www.youtube.com/winchestercc</a>

Note: Members of the public should note that a live video feed of the meeting will be available from the council's YouTube channel ( [youtube.com/WinchesterCC](http://youtube.com/WinchesterCC) ) during the meeting.

## AGENDA

1. **Apologies**  
To record the names of apologies given.
2. **Disclosure of Interests**  
To receive any disclosure of interests from Members and Officers in matters to be discussed.

Note: Councillors are reminded of their obligations to declare disclosable pecuniary interests, personal and/or prejudicial interests in accordance with legislation and the Council's Code of Conduct.

3. **Public Participation**  
To receive and note questions asked and statements made from members of the public on issues relating to the responsibility of this Advisory Group.

NB. members of the public are required to register with Democratic Services three clear working days (by 5pm Thursday, 2 March 2023) before the meeting (contact [democracy@winchester.gov.uk](mailto:democracy@winchester.gov.uk) or 01962 848 264)



4. **Councillor Participation for Non LPAG members.**

To receive and note questions asked and statements made from councillors on issues relating to the responsibility of this Advisory Group.

NB. Councillors are required to register with Democratic Services three clear working days (by 5pm Thursday, 2 March 2023) before the meeting (contact [democracy@winchester.gov.uk](mailto:democracy@winchester.gov.uk) or 01962 848 264)

5. **Minutes of the previous meeting held on 9 March 2022 (Pages 5 - 8)**

That the minutes of the meeting be signed as a correct record.

6. **Local Plan Update - Regulation 18 Consultation (Pages 9 - 44)**

Presentation attached.

**Laura Taylor  
Chief Executive**

All of the Council's publicly available agendas, reports and minutes are available to view and download from the Council's [Website](#) and are also open to inspection at the offices of the council. As part of our drive to minimise our use of paper we do not provide paper copies of the full agenda pack at meetings. We do however, provide a number of copies of the agenda front sheet at the meeting which contains the QR Code opposite. Scanning this code enables members of the public to easily access all of the meeting papers on their own electronic device. Please hold your device's camera or QR code App over the QR Code so that it's clearly visible within your screen and you will be redirected to the agenda pack.



28 February 2023

Agenda Contact: Matthew Watson, Senior Democratic Services Officer  
Tel: 01962 848 317, email: [mwatson@winchester.gov.uk](mailto:mwatson@winchester.gov.uk)

**MEMBERSHIP**

Local Plan Advisory Group

Councillor Porter (Chairperson)

Cllr Learney  
Cllr Tod  
Cllr Edwards  
Cllr Evans  
Cllr Horrill  
Cllr Read

## **TERMS OF REFERENCE**

The purpose of the Advisory Group is to receive updates and discuss matters relating to the preparation of the Council's Local Plan and to assist the Cabinet and Council in their decision making so as to ensure:

- that the preparation of the Local Plan is integrated with the wider aims and objectives of the Council on behalf of its communities
- that Members are actively informed on progress on the Local Plan and provided with appropriate opportunities to participate in policy development
- that there is a shared understanding of issues relating the preparation of the evidence base, arrangements for community involvement, duty to cooperate with neighbouring authorities, preparation and publication of documents and associated public consultation.
- that there are high levels of public engagement with the preparation of the Local Plan

Whilst noting that decision making is a matter for Cabinet and Council, the Advisory Group may be expected to comment upon:

- the implications of the emerging evidence base and arrangements for community involvement; publication of preparatory draft documents and associated public consultation.
- any Local Plan document for initial consultation;
- any Proposed Submission Local Plan Document prior to submission to the Secretary of State.
- the Inspector's report and recommended modifications after the Examination.

Whilst it will normally meet in public the Advisory Group may meet privately to discuss matters which are confidential, or policy related at the discretion of the Chairperson. As a non-decision-making body the format of information and advice to the Advisory Group will primarily be by presentation and oral update rather than written report. A brief minute of the Advisory Group will be taken.

### **Public Participation**

To receive and note questions asked and statements made from members of the public on matters which fall within the remit of the Advisory Group. Members of the public are required to register with Democratic Services at least three clear working days (5pm, Thursday, 2 March 2023) before the meeting (see above for further details).

### **Filming and Broadcast Notification**

This meeting will be recorded and broadcast live on the Council's YouTube site and may also be recorded and broadcast by the press and members of the public – please see the Access to Information Procedure Rules within the Council's Constitution for further information, which is available to view on the [Council's website](#). Please note that the video recording is subtitled, but you may have to enable your device to see them (advice on how to do this is on the meeting page).

This page is intentionally left blank

# Public Document Pack Agenda Item 5

## LOCAL PLAN ADVISORY GROUP

Wednesday, 9 March 2022

Attendance:

Councillors  
Gordon-Smith (Chairperson)

Brook  
Clear  
Edwards

Horrill  
Thompson

Apologies for Absence:

Councillor Evans

Members in attendance who spoke at the meeting

Councillor Weston

Other members in attendance:

Councillors Cook, Read, Pearson, Warwick and Williams

[Audio and video recording of this meeting](#)

---

1. **APOLOGIES**

Apologies were noted as above.

2. **DISCLOSURE OF INTERESTS**

None

3. **MINUTES OF THE PREVIOUS MEETING HELD ON 13 DECEMBER 2021**

RESOLVED:

That the minutes of the previous meeting held on the 13 December 2021 be approved and adopted.

Councillor Horrill sought clarification regarding an agenda item on the minutes of the meeting of 27 September 2021 concerning the analysis of the comments that had been submitted on the local plan vision/growth strategy. The Chairperson asked Councillor Horrill to email him with the details and he would endeavour to respond.

#### 4. **PUBLIC AND MEMBER PARTICIPATION**

Councillor Jon Woodman, Chair, Swanmore Parish Council and Chair, Winchester District Association of Local Councils addressed the meeting. He advised that several parish councils had expressed concern over the Local Plan (LP) timescales, the hierarchy settlement table and infilling. The Strategic Planning Manager responded to the points raised and clarified the query over timescales, he also informed that following an analysis of comments received regarding the settlement hierarchy that this would be updated. Officers were engaged with parish councils and several meetings had taken place recently with more being planned.

Councillor Horrill sought clarification regarding the process being adopted for upcoming meetings with parish councils, particularly regarding the pre-election period and the timescales for feedback from parish councils on SHELAA sites. The Corporate Head of Regulatory responded to these questions.

#### 5. **LOCAL PLAN - VISION & OBJECTIVES (PRESENTATION)**

The Principal Planning Officer and Planning Officer provided the advisory group with a presentation, ([available here](#)) which had previously been circulated to members regarding the drafting of a new local plan. The presentation included guidance from the National Planning Policy Framework (NPPF) and Planning Advisory Service (PAS), feedback from the strategic issues and priorities consultation, priorities from the council plan and the next steps to be taken.

Members made comments and asked several questions concerning the presentation which included the following:

- Regarding the NPPF requirement for “deliverability”, how would “deliverability” be quantified?
- At what stage would the monitoring programme be produced and available?

These questions were responded to by officers and the Chairperson accordingly.

RESOLVED:

1. That the presentation and update be noted
2. That officers consider the points made by members

#### 6. **LOCAL PLAN PROPOSED VISION/OBJECTIVES**

The Principal Planning Officer provided the advisory group with a presentation, ([available here](#)) which had previously been circulated to members regarding the new draft vision and objectives for the local plan. The draft had taken on board best practice, the current vision in the adopted local plan, the council plan and comments that had been received from the strategic issues and priorities consultation.

Members made comments and asked several questions concerning the presentation which included the following:

- Clarification to the meaning of the statement on page 21 “*and respond to the wider relationship with neighbouring authorities.*”
- Should Whiteley be more explicitly referenced as part of the three spatial areas referred to on page 21
- Within the “vibrant local economy” objectives, should more emphasis be placed on the agriculture sector, especially food and drink and also with digital requirements
- How do we make it clear and understood which policies would implement specific elements of the vision?
- By how much could the emerging vision influence the level and distribution of development?
- The likely date for availability of the settlement policies
- Whether the housing allocation included any estimate for Partnership for South Hampshire (PfSH) requirements?

These questions were responded to by officers and the Chairperson accordingly.

RESOLVED:

1. That the presentation and update be noted
2. That officers consider the points made by members

## 7. **LOCAL PLAN DESIGN SOUTH EAST REPORTS**

The Strategic Planning Manager provided the advisory group with a presentation, ([available here](#)) which had previously been circulated to members. The presentation advised that the city council had appointed Design South East to facilitate several design workshops which were attended by local people, local organisations, councillors, consultants and developers during October and November 2021. The presentation displayed the outputs from these three workshops.

Members made comments and asked several questions concerning the presentation which included the following:

- The importance of integrating and promoting good design within our policies with particular reference made to Village Design Statements (VDS)
- The importance of encouraging parish councils to adopt the design codes

These questions were responded to by officers and the Chairperson accordingly.

RESOLVED:

1. That the presentation and update be noted
2. That officers consider the points made by members

The meeting commenced at 6.00 pm and concluded at 7.40 pm

Chairperson



**YOUR PLACE  
YOUR PLAN.**  
Winchester District Local Plan

# LOCAL PLAN UPDATE

Regulation 18 Consultation

LPAG meeting 8<sup>th</sup> March 2023



# KEY AREAS OF FOCUS FOR THE PLAN:

Local Plan Regulation 18 Consultation Period: **02 November to 23:59 hours on 14 December 2022**

Page 10

Where we  
are with the  
**LOCAL PLAN**



- All of the consultation techniques that we used for the SIP consultation were reviewed as we were keen to expand on our award winning approach to see what other techniques we could use to engage with the maximum number of people.
- Increased our radio and press coverage of the LP consultation as well as undertaking a number of LP drop-in events across the district and two specialised online events.
- Officers attended a number of lunchtime drop-in events at Sparsholt College, University of Winchester and the Peter Symonds College.
- The number of respondents to this public consultation was even higher than the SIP public consultation.



# KEY AREAS OF FOCUS FOR THE PLAN:



**Vision and Objectives**



**Carbon Neutrality and Designing  
for Low Carbon Infrastructure**



**High Quality Well-Designed Places  
and Living Well**



**Sustainable Transport and  
Active Travel**



**Biodiversity and the Natural  
Environment**



**The Historic Environment**



**Homes for all**



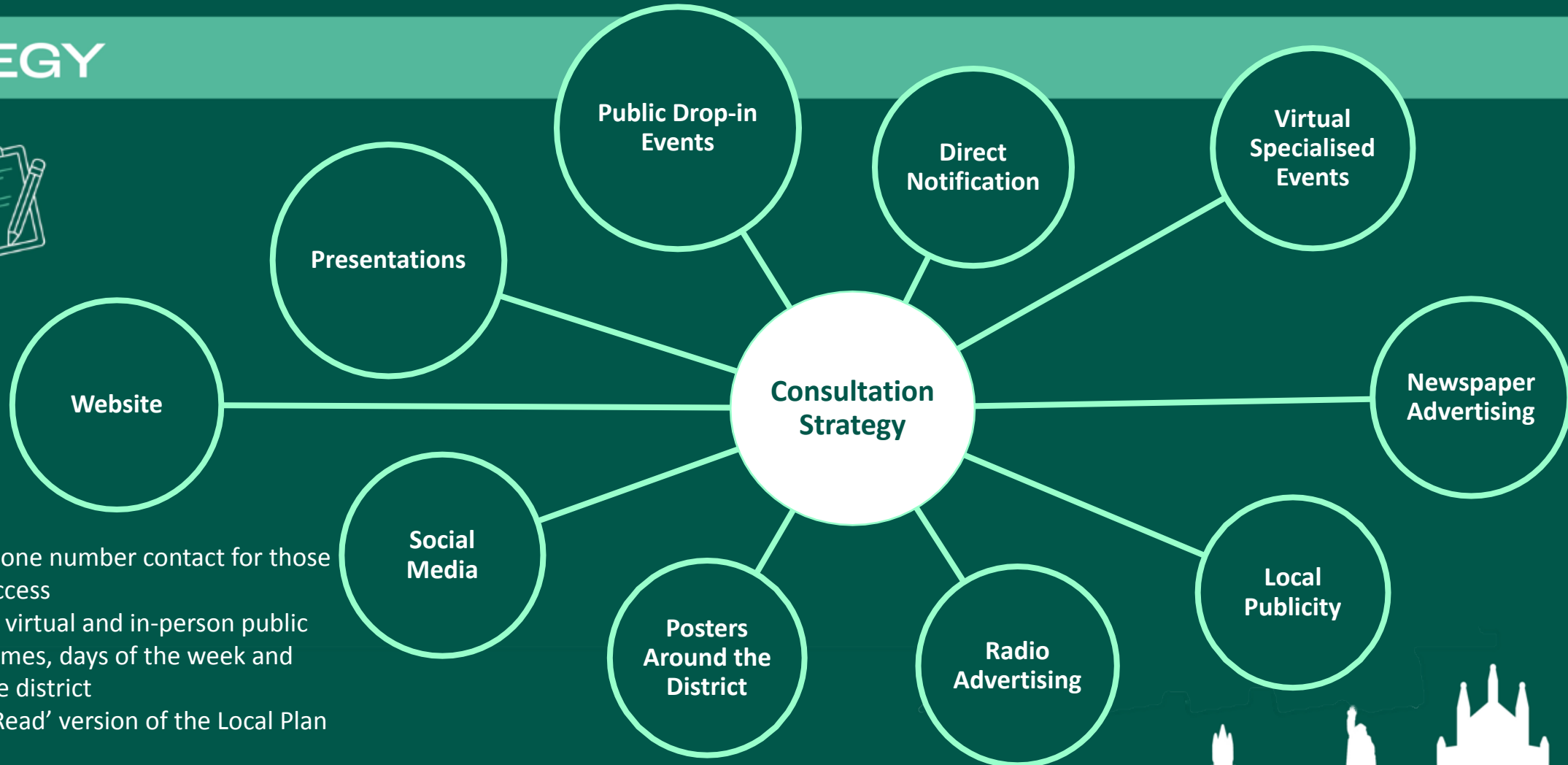
**Creating a Vibrant Economy**



## STRATEGY



Page 13



### ACCESSIBILITY

- Advertised with phone number contact for those without internet access
- Completed various virtual and in-person public events at various times, days of the week and locations across the district
- Provided an 'Easy Read' version of the Local Plan



## ENGAGEMENT

## OUTCOME

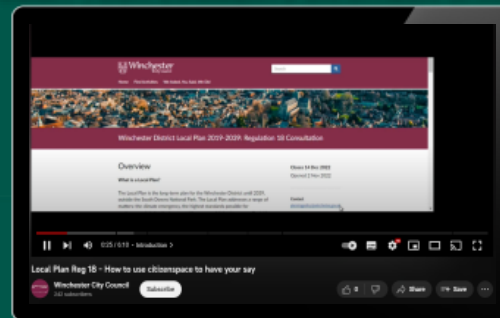
18 Facebook  
Posts

Reach:  
8346 (organic)  
6957 (paid)

Engagement:  
301 (organic)  
811 (paid)

398

PEOPLE WATCHED THE VIDEO ON HOW TO  
SUBMIT YOUR COMMENTS ON CITIZEN SPACE



7777

TOTAL WHICH STATED THEY EITHER SUPPORTED, OBJECTED  
OR NEITHER SUPPORTED OR OBJECTED

3438

WRITTEN RESPONSES

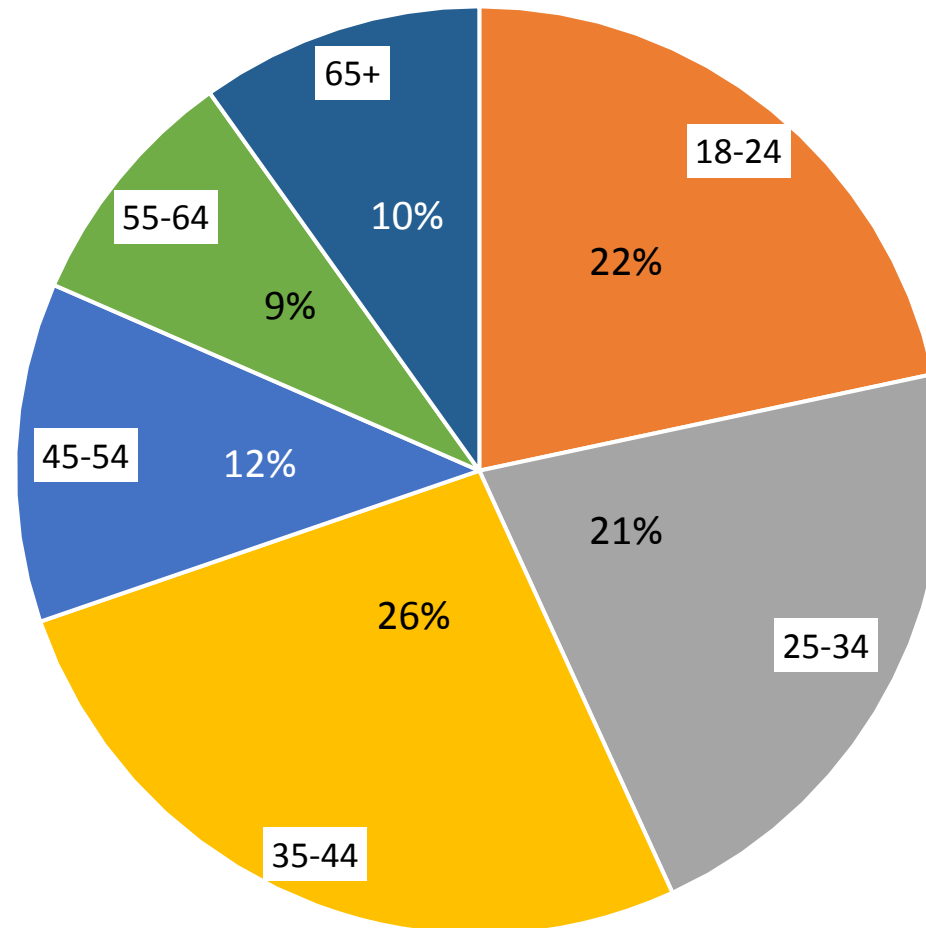
967

REGULATION 18 CONSULTATION  
RESPONDENTS ON CITIZENSPACE

## ENGAGEMENT

## OUTCOME

Facebook reach by age group



Winchester City Council utilised continuous paid advertising in regional radio stations to publicise the consultation.

On Winchester Radio, the advertisement was broadcasted **6 TIMES PER DAY**, **EVERY 3 HOURS**, BETWEEN 06:00-11:59, **EVERY DAY** OF THE WEEK

Page 16



On Bauer Media Digital Stations, the advertisement reached **250,016 impressions** over the 6-week consultation period, all within the Winchester District.



**250,016**  
DIGITAL CAMPAIGN IMPRESSIONS





# YOUR PLACE YOUR PLAN. DESIGN AND BRANDING

## GETTING THE MESSAGE OUT THERE

Winchester District Local Plan

Winchester City Council used paid advertising in newspapers to publicise the consultation.

These half page advertisements were released in three different papers at the beginning, middle and end of the consultation period.

Page 17

These papers were:  
**The Hampshire Chronicle**  
**Mid Hampshire Observer**  
**Portsmouth News**

Advertisements could be seen in both digital and hard copies of the newspapers.

A **statutory notice** was also published on 02 November 2022.

**Winchester City Council Public Notice**  
**Winchester District Local Plan 2039**  
– Consultation Draft Local Plan  
(Regulation 18: Preparation of a Local Plan)  
Planning and Compulsory Purchase Act 2004  
Town and Country Planning (Local Planning) (England) Regulations 2012

Winchester City Council has published a 'Consultation Draft Local Plan' under Regulation 18 of the above Regulations for a period of 6 weeks from 2nd November 2022 until midnight on 14 December 2022. The Draft Local Plan consultation invites you to submit your views on the draft policies and site allocations that the new Local Plan 2039 needs to include. This consultation will inform the 'publication' version of the draft Local Plan, which will be published for further consultation in August 2023.

The new Local Plan 2039 will cover all of Winchester District except for the part within the South Downs National Park (which has its own Local Plan). The Draft Local Plan will set out the development strategy and policy framework for the area and allocate or designate land accordingly. Once adopted, the new Local Plan will be used to guide decisions on planning applications up to 2039.

The Draft Local Plan has taken into account comments received on the 'Strategic Issues & Priorities' consultation document, published February 2021. This set out alternative ways in which the District (outside the National Park) might be able to accommodate the development that it needs to plan for and what the future strategic vision should be for the District. These have helped the Council to develop the planning policies and site allocations contained in the Draft Local Plan. An 'Integrated Impact Assessment' (including Sustainability Appraisal) and a 'Habitats Regulations Assessment' of the draft Local Plan is also published for consultation.

The consultation documents and associated evidence documents can be viewed online on the City Council's website: [www.localplan.winchester.gov.uk](http://www.localplan.winchester.gov.uk), where information is available on how to submit responses electronically (the preferred method). Paper copies of the consultation documents are available at City Council's main reception and at local libraries. Comments can be emailed to [planningpolicy@winchester.gov.uk](mailto:planningpolicy@winchester.gov.uk), or can be submitted by post to Planning Policy Team, Winchester City Council, City Offices, Colebrook Street, Winchester, SO23 9LJ.

All responses should be received by 23:59 hours on 14 December 2022. Please be aware that anonymous responses cannot be accepted and all comments will be made available on the Council's website (address and contact details will not be released).

Adrian Fox  
Strategic Planning Manager, 2nd November 2022



# YOUR PLACE YOUR PLAN • LOCAL PRESS GETTING THE MESSAGE OUT THERE

## YOUR PLACE YOUR PLAN

Winchester District Local Plan

Many residents have been part of developing the Local Plan.

Our draft 'Regulation 18' Local Plan is out for consultation from 2 November 2022 until midnight on 14 December 2022. Some of the priorities in the plan include:

- Responding to the climate emergency, setting high standards for environmental design for homes and making it attractive, safe and easy to walk, cycle and use other low carbon methods of transport
- Affordable housing - recognising it's more difficult for all, especially younger generations to find homes they can afford, for the first time, the plan places an 'expectation' for affordable housing that was too often missed, with a minimum requirement that developers have to achieve
- A brownfield site first approach across the district. All sites put forward in the plan have been assessed to have the best sustainability and have the least environmental impact on our environment. 90% of sites submitted by developers have not been built.

Let us know what you think here: [www.localplan.winchester.gov.uk](http://www.localplan.winchester.gov.uk)

“The Winchester district has 127,500 residents and all see our local area as home. We are privileged to live in a place as beautiful and diverse as we do.

That's why we need you to help us now. We're at a critical stage in developing the Local Plan - an important document that outlines development requirements and potential development sites for the parts of our district outside the South Downs National Park. To make sure the plan is meaningful and sensitive to the needs of both our growing and changing population, we listen to you. So, please do respond to our consultation.

It is based on what local people have told us, and it's the most ambitious plan we've drafted yet, in terms of making our district sustainable for this and future generations to enjoy.”

CLL JACKIE PORTER  
CABINET MEMBER FOR PLANNING AND THE LOCAL PLAN

## Winchester District Local Plan 2039 Consultation

Have your say - it's your place, your plan!

Winchester City Council has published a new draft Local Plan which is open for public consultation for a period of 6 weeks from Wednesday 2nd November until 23.59 on Wednesday 14th December 2022.

The Local Plan is the long term plan for parts of the Winchester district outside the South Downs National Park. Focusing on development until 2039, the plan addresses a range of matters: the climate emergency, the highest standards possible for environmental design for homes and for commercial development, affordable housing, low carbon methods of transport and the natural and historic environment.

The council is looking for your views on a range of policies and sites that have been allocated for future development. We want to hear from you and other evidence documents can also be viewed online at the new Local Plan website [www.localplan.winchester.gov.uk](http://www.localplan.winchester.gov.uk)

Your input in the next stage of your Local Plan process is extremely important and the council look forward to hearing your views.

Scan the QR code below or have your say at [www.localplan.winchester.gov.uk](http://www.localplan.winchester.gov.uk)

It's your place, your plan!



## Winchester

Local Plan (Regulation 18) Report

Proposed changes to the Local Plan

- 1. **Climate Emergency:** The Local Plan includes the proposed development policies to address the climate emergency and the need for high standards of environmental design for homes and for commercial development, affordable housing, low carbon methods of transport and the natural and historic environment.
- 2. **Affordable Housing:** The Local Plan includes the proposed development policies to address the need for high standards of environmental design for homes and for commercial development, affordable housing, low carbon methods of transport and the natural and historic environment.
- 3. **Transport:** The Local Plan includes the proposed development policies to address the need for high standards of environmental design for homes and for commercial development, affordable housing, low carbon methods of transport and the natural and historic environment.
- 4. **Environment:** The Local Plan includes the proposed development policies to address the need for high standards of environmental design for homes and for commercial development, affordable housing, low carbon methods of transport and the natural and historic environment.

Proposals for new development sites (allocations) were also published. These include 90 new homes at 11 sites in the Winchester district and 10 sites in the Winchester district.

Public consultation will be held from 2nd November 2022 until 14th December 2022. It will be held in person and online.

For more information, please visit [www.localplan.winchester.gov.uk](http://www.localplan.winchester.gov.uk)

## YOUR PLACE YOUR PLAN

Winchester District Local Plan

Both online and hard copy provisions of newsletters, notices and articles supported residents, businesses, charities, and organisations to have their say.

Parish and Town Councils, Ward Councillors and planning/design organisations also publicised the consultation to increase engagement with local residents and workers in the Winchester District.

Winchester City Council has published a new draft Local Plan which is open for public consultation for a period of 6 weeks from Wednesday 2nd November until 23.59 on Wednesday 14th December 2022.

The Local Plan is the long term plan for parts of the Winchester district outside the South Downs National Park. Focusing on development until 2039, the plan addresses a range of matters: the climate emergency, the highest standards possible for environmental design for homes and for commercial development, affordable housing, low carbon methods of transport and the natural and historic environment.

The council is looking for your views on a range of policies and sites that have been allocated for future development. We want to hear from you and other evidence documents can also be viewed online at the new Local Plan website [www.localplan.winchester.gov.uk](http://www.localplan.winchester.gov.uk)

Your input in the next stage of your Local Plan process is extremely important and the council look forward to hearing your views.

## Bishop's Waltham Matters

Winchester City Council District Draft Local Plan

YOUR PLACE YOUR PLAN

Winchester City Council has published a new draft Local Plan which is open for public consultation for a period of 6 weeks from Wednesday 2nd November 2022 until 23.59 on Wednesday 14th December 2022.

The Local Plan is the long term plan for parts of the Winchester district outside the South Downs National Park. Focusing on development until 2039, the plan addresses a range of matters: the climate emergency, the highest standards possible for environmental design for homes and for commercial development, affordable housing, low carbon methods of transport and the natural and historic environment.

The council is looking for your views on a range of policies and sites that have been allocated for future development. We want to hear from you and other evidence documents can also be viewed online at the new Local Plan website [www.localplan.winchester.gov.uk](http://www.localplan.winchester.gov.uk)

Your input in the next stage of your Local Plan process is extremely important and the council look forward to hearing your views.

## Winchester District Regulation 18 Draft Local Plan 2019-2039

Winchester City Council has published a new draft Local Plan which is open for public consultation for a period of 6 weeks from Wednesday 2nd November 2022 until 23.59 on Wednesday 14th December 2022.

The Local Plan is the long term plan for parts of the Winchester district outside the South Downs National Park. Focusing on development until 2039, the plan addresses a range of matters: the climate emergency, the highest standards possible for environmental design for homes and for commercial development, affordable housing, low carbon methods of transport and the natural and historic environment.

The council is looking for your views on a range of policies and sites that have been allocated for future development. We want to hear from you and other evidence documents can also be viewed online at the new Local Plan website [www.localplan.winchester.gov.uk](http://www.localplan.winchester.gov.uk)

Your input in the next stage of your Local Plan process is extremely important and the council look forward to hearing your views.

## LOCAL PLAN 2019 - 2039

PUBLIC CONSULTATION

HAVE YOUR SAY ON THESE TOPICS

Winchester City Council has published a new draft Local Plan which is open for public consultation for a period of 6 weeks from Wednesday 2nd November 2022 until 23.59 on Wednesday 14th December 2022.

The Local Plan is the long term plan for parts of the Winchester district outside the South Downs National Park. Focusing on development until 2039, the plan addresses a range of matters: the climate emergency, the highest standards possible for environmental design for homes and for commercial development, affordable housing, low carbon methods of transport and the natural and historic environment.

The council is looking for your views on a range of policies and sites that have been allocated for future development. We want to hear from you and other evidence documents can also be viewed online at the new Local Plan website [www.localplan.winchester.gov.uk](http://www.localplan.winchester.gov.uk)

Your input in the next stage of your Local Plan process is extremely important and the council look forward to hearing your views.

# YOUR PLACE YOUR PLAN.

Winchester District Local Plan

# DESIGN AND BRANDING GETTING THE MESSAGE OUT THERE



# 507

Posters printed and distributed across the district

## POSTERS SENT TO:

- Parish Councils
- WCC Departments
- Gyms and Leisure Centers
- GP Surgeries / Hospital
- Bus stops
- Colleges and Universities
- Places of Worship
- Community Centers
- Libraries
- Car parks
- Public Notice boards

## WITH SUPPORT FROM:

- Estates Team
- Business Support Team
- Sheltered Housing Team
- Customer Services Team
- Facilities Team
- Community Safety Team
- Environmental Services Team

# YOUR PLACE YOUR PLAN.

Winchester District Local Plan

# DESIGN AND BRANDING GETTING THE MESSAGE OUT THERE

Page 20



**YOUR PLACE  
YOUR PLAN.**  
Winchester District Local Plan



CLIMATE

HAVE YOUR SAY



**YOUR PLACE  
YOUR PLAN.**  
Winchester District Local Plan



TRAVEL

HAVE YOUR SAY



**YOUR PLACE  
YOUR PLAN.**  
Winchester District Local Plan



HOMES  
FOR ALL

HAVE YOUR SAY



**YOUR PLACE  
YOUR PLAN.**  
Winchester District Local Plan

BE HEARD HAVE YOUR SAY  
CONSULTATION CLOSES 14 DECEMBER



**YOUR PLACE  
YOUR PLAN.**  
Winchester District Local Plan

# HARD TO REACH GROUPS GETTING THE MESSAGE OUT THERE

In recognition that Gypsies and Travellers are hard-to-reach groups, Winchester City Council employed **Opinion Research Services (ORS)** to reach out and contact these communities.

ORS prepared the Gypsy and Traveller Accommodation Needs Assessment.

Gypsy and Traveller groups in the Winchester District were sent a letter encouraging them to speak to ORS directly about any new sites or provide comments on draft policies.

An **Easy Read** version of the draft Local Plan was also produced to increase accessibility for those with disabilities and other hard-to-reach groups.



In order to reach young people, the Strategic Planning team engaged in **social media advertising** and **lunchtime pop-up events** at Peter Symonds College, Sparsholt College, and the University of Winchester



# EVENTS - GAINING INFORMATION

## SPECIALISED VIRTUAL EVENTS



Our specialized virtual events were during the consultation on topics of carbon neutrality, homes for all and design. These included presentations guest speakers who are experts in the field of topics chosen.

**Raising the Bar on Design**  
15 November 2022



**- Setting the Standard on Net Zero Carbon Homes**  
23 November 2022

**158**

TOTAL VIRTUAL EVENT ATTENDEES

**213**

VIEWS OF LIVE EVENT YOUTUBE RECORDINGS

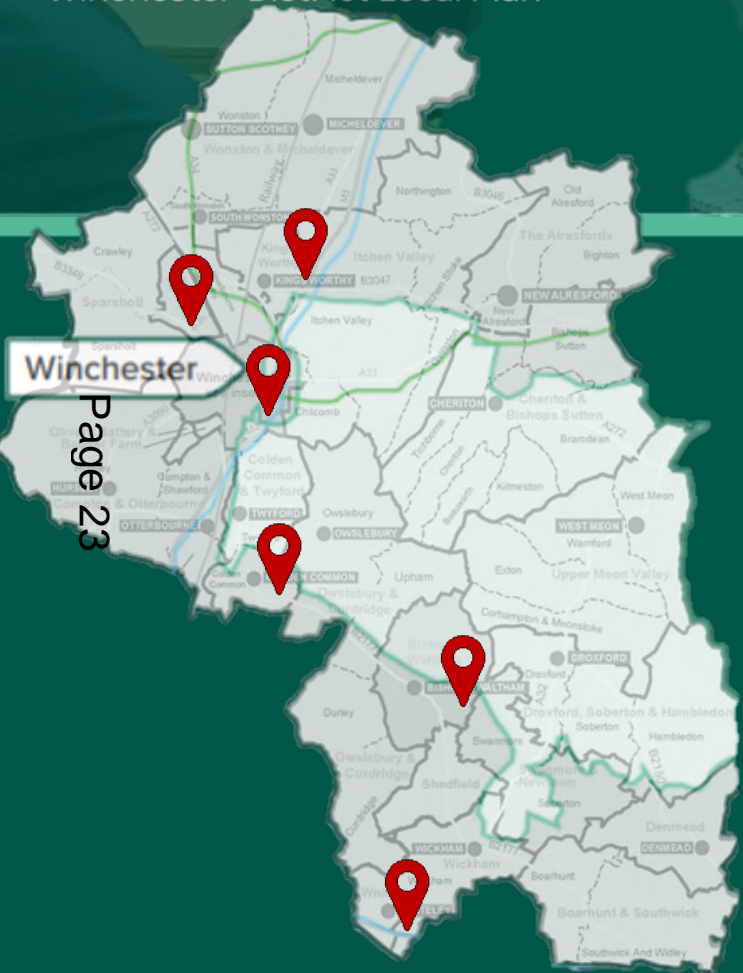
## LIVE EVENTS

- LinkedIn - Advertisement and promotion
- Eventbrite - Attendee Management
- MS Teams - Hosting live events
- YouTube - Publishing event recordings



# EVENTS - GAINING INFORMATION

## PUBLIC DROP-IN EVENTS



### INCREASED ACCESSIBILITY BY:

- Multiple locations in the North, South and Centre of the District
- long sessions between 14:30-19:00
- Alternating days of the week
- Accessible locations and venues
- Mixture of online and in-person events

Date	Time	Location	Number of attendees
Monday 07 November	14:30-19:00	Kings Worthy	10
Friday 11 November	14:30-19:00	Whiteley	29
Friday 18 November	14:30-19:00	Bishops Waltham	73
Tuesday 22 November	14:30-19:00	Winchester	27
Thursday 24 November	14:30-19:00	Colden Common	51
Tuesday 29 November	15:30-19:00	Littleton and Harestock	37

# EVENTS - GAINING INFORMATION

## PUBLIC DROP-IN EVENTS



TOTAL OF AT LEAST

# 227

PUBLIC DROP-IN  
EVENT ATTENDEES

AT LEAST **37** HOURS in face-to-face consultation with the public, including universities, colleges, online Q&As and drop-in sessions around the district.



# EVENTS - GAINING INFORMATION

## PRESENTATIONS

Before and during the Regulation 18 consultation period for the draft Winchester District Local Plan 2039, several presentations were held at the following events to reach a wide range of groups and organisations.

These presentations are regarded as a key method of public consultation, informing attendees allowing for questions and debates that further understanding and engagement.

Date	Time	Meeting/Organisations
01 November	18:00-19:30	West of Waterlooville Forum
04 November	08:00-12:00	Chamber of Commerce & Business Improvement District
09 November	18:30-20:00	Town Forum Briefing
15 November	15:00-17:00	Parish and Town Council Liaison Meeting
21 November	11:00-12:00	NHS Modernising our Hospitals and Health Services Programme Partner Group
30 November	14:00-15:30	University of Winchester



# Consultation responses

## Vision and Objectives

Written comments to analyse	
Policy SP1 - Vision and Objectives	84
Policy SP2 Spatial Strategy and Development Principles	90
Policy SP3 Development in the Countryside	44
<b>Total</b>	<b>218</b>

# Consultation responses

## Carbon Neutrality and Designing for Low Carbon Infrastructure

### Written comments to analyse

Policy CN1 Mitigating and Adapting to Climate Change	73
Policy CN2 Energy Hierarchy	34
Policy CN3 Energy Efficiency Standards to Reduce Carbon Emissions	73
Policy CN4 Water Efficiency Standards in New Developments	24
Policy CN5 Renewable and Low Carbon Energy Schemes	39
Policy CN6 Micro Energy Generation Schemes	17
Policy CN7 Energy Storage	11
<b>Total</b>	<b>271</b>

# Consultation responses

High Quality Place and Living Well

## Written comments to analyse

Policy D1 High Quality, Well Designed and Inclusive Places	53
Policy D2 Design Principles for Winchester Town	30
Policy D3 Design Principles for South Hampshire Urban Areas	5
Policy D4 Design Principles for Market Towns and Rural Villages	20
Policy D5 Masterplan	37
Policy D6 Brownfield Development and Making Best Use of Land	46
Policy D7 Development standards	13
Policy D8 Contaminated Land	8
Policy D9 Impact of Overheating	10
Policy D10 Shopfronts	7
Policy D11 Signage	6
<b>Total</b>	<b>235</b>

# Consultation responses

Sustainable Transport and Active Travel

## Written comments to analyse

Policy T1 Sustainable and Active Transport and Travel	88
Policy T2 Parking for New Developments	55
Policy T3 Promoting Sustainable Travel Modes of Transport and the Design and Layout of Parking for New Developments	40
Policy T4 Access for New Developments	24
<b>Total</b>	<b>207</b>

# Consultation responses

## Biodiversity and the Natural Environment

Page 30

### Written comments to analyse

Policy NE1 Protecting and Enhancing Biodiversity and the Natural Environment in the District	66
Policy NE2 Major Commercial, Educational and MOD Establishments in the Countryside	10
Policy NE3 Open Space, Sport and Recreation	38
Policy NE4 Green and Blue Infrastructure	37
Policy NE5 Biodiversity	46
Policy NE6 Flooding, Flood Risk and the Water Environment	29
Policy NE7 Settlement Gaps	78
Policy NE8 South Downs National Park	17
Policy NE9 Landscape Character	36

### Written comments to analyse

Policy NE10 Protecting Open Areas	77
Policy NE11 Open Space Provision for New Developments	17
Policy NE12 Equestrian Development	9
Policy NE13 Leisure and Recreation in the Countryside	9
Policy NE14 Rural Character	31
Policy NE15 Special Trees, Important Hedgerows and Ancient Woodlands	27
Policy NE16 Nutrient Neutrality Water Quality Effects on the Special Protection Areas (SPAs), Special Areas of Conservation (SACs) and Ramsar Sites of the Solent and the River Itchen	21
Policy NE17 Rivers, Watercourses and their Settings	16
<b>Total</b>	<b>564</b>

# Consultation responses

## The Historic Environment

Written comments to analyse		
	Policy HE1 Strategic Policy	12
	Policy HE2 All Heritage Assets (both designated & non-designated)	7
	Policy HE3 Designated Heritage Assets	3
	Policy HE4 Non-Designated Heritage Assets	7
Page 31	Policy HE5 Mitigation and Avoiding the Loss of Heritage Assets (designated and non-designated heritage assets)	8
	Policy HE6 Scheduled monuments and nationally important non-designated assets	5
	Policy HE7 Non-designated archaeological assets	3
	Policy HE8 Applications Affecting Listed Buildings	6
	Policy HE9 Change of use to Listed Buildings	7
	Policy HE10 Development in Conservation Areas	11
	Policy HE11 Demolition in Conservation Areas	6
	Policy HE12 Registered Historic Parks and Gardens	10
	Policy HE13 Non-Designated Historic Rural and Industrial Heritage Assets	4
	Policy HE14 Improvements or Alterations to Improve the Energy Efficiency of Designated and Non-Designated Historic Assets	8
	<b>Total</b>	<b>97</b>

# Consultation responses

Homes for All

Page  
32

Written comments to analyse				
	Policy H1 Housing Provision	251	Policy H10 Houses in Multiple Occupation (HMOs)	4
	Policy H2 Housing Phasing and Supply	39	Policy H11 Housing for Essential Rural Workers	6
	Policy H3 Spatial Housing Distribution	64	Policy H12 Provision for Gypsies, Travellers and Travelling Showpeople	13
	Policy H4 Development within Settlements	27	Policy H13 Safeguarding Traveller Sites	0
	Policy H5 Meeting Housing Needs	54	Policy H14 Authorised Traveller Site Intensification	1
	Policy H6 Affordable Housing	56	Policy H15 Authorised New / Expanded Traveller Sites	2
	Policy H7 Affordable Housing Exception Sites to Meet Local Needs	15	Policy H16 The Nurseries, Shedfield	2
	Policy H8 Small Dwellings in the Countryside	1	Policy H17 Carousel Park, Micheldever	5
	Policy H9 Purpose Built Student Accommodation	13	Policy H18 Tynefield, Whiteley	1
			<b>Total</b>	<b>554</b>



# Consultation responses

Creating a Vibrant Economy

Written comments to analyse	
Policy E1 Vibrant Economy	20
Policy E2 Spatial Distribution of Economic Growth	11
Policy E3 Town Centres Strategy and Hierarchy	12
Policy E4 Retail and Main Town Centre Uses	12
Policy E5 Enhancing Employment Opportunities	3
Policy E6 Retaining Employment Opportunities	8
Policy E7 Maintaining the Vitality and Viability of Town Centres	9
Policy E8 Local Shops, Services and Facilities	10
Policy E9 Economic Development in the Rural Area	12
Policy E10 Farm Diversification	13
Policy E11 Visitor-Related Development within the Countryside	5
<b>Total</b>	<b>115</b>

# Consultation responses

## Development Allocations - Winchester

Written comments to analyse	
W1 Barton Farm Major Development Area	27
W2 Sir John Moore Barracks	55
W3 St Peter's Car Park	16
W4 Land West of Courtenay Road	108
W5 Bushfield Camp	60
W6 Winnall	12
W7 Central Winchester Regeneration	23
W8 Station Approach Regeneration Area	20
W9 Bar End Depot	10
W10 Former River Park Leisure Centre site	26
W11 University of Winchester / Royal Hampshire County Hospital	46
<b>Total</b>	<b>403</b>

# Consultation responses

Development Allocations - South Hampshire Urban Areas

Written comments to analyse	
SH1 West of Waterlooville, including Newlands	8
SH2 North Whiteley	21
SH3 Whiteley Green	4
SH4 Solent Business Park	3
SH5 Little Park Farm	3
SH6 Botley Bypass	6
<b>Total</b>	<b>45</b>



# Consultation responses

Development Allocations – The Market Towns and Rural Area - Bishops Waltham

Written comments to analyse	
BW1 The Vineyard/Tangier Lane (Bishop's Waltham)	5
BW2 Albany Farm (Bishop's Waltham)	4
BW3 Tollgate Sawmill (Bishop's Waltham)	10
BW4 Land north of Rareridge Lane (Bishop's Waltham)	99
<b>Total</b>	<b>118</b>



# Consultation responses

Development Allocations – The Market Towns and Rural Areas – New Alresford

Written comments to analyse	
NA1 The Dean (New Alresford)	3
NA2 Sun Lane (New Alresford)	3
NA3 Neighbourhood Plan Designated Area (New Alresford)	13
<b>Total</b>	<b>19</b>

# Consultation responses

Development Allocations – The Market Towns and Rural Areas – **Colden Common**

## Written comments to analyse

CC1 Clayfield Park (Colden Common)	18
CC2 Colden Common Farm (Colden Common)	17
CC3 Land at Main Road (Colden Common)	21
CC4 Land adjoining 85 Church Lane (Colden Common)	12
<b>Total</b>	<b>68</b>

# Consultation responses

Development Allocations – The Market Towns and Rural Areas – Kings Worthy

## Written comments to analyse

KW1 Cornerways & Merrydale (Kings Worthy)

12

KW2 Land adjoining the Cart & Horses (Kings Worthy)

15

**Total**

**27**

# Consultation responses

Development Allocations – The Market Towns and Rural Areas – Wickham

Written comments to analyse	
WK1 Winchester Road Housing and Open Space Allocation (Winchester Road and Mill Lane)	8
WK2 The Glebe Housing and Open Space Allocation (Wickham)	7
WK3 Welbourne Open Space (Wickham)	9
WK4 Ravenswood (Wickham)	15
<b>Total</b>	<b>39</b>



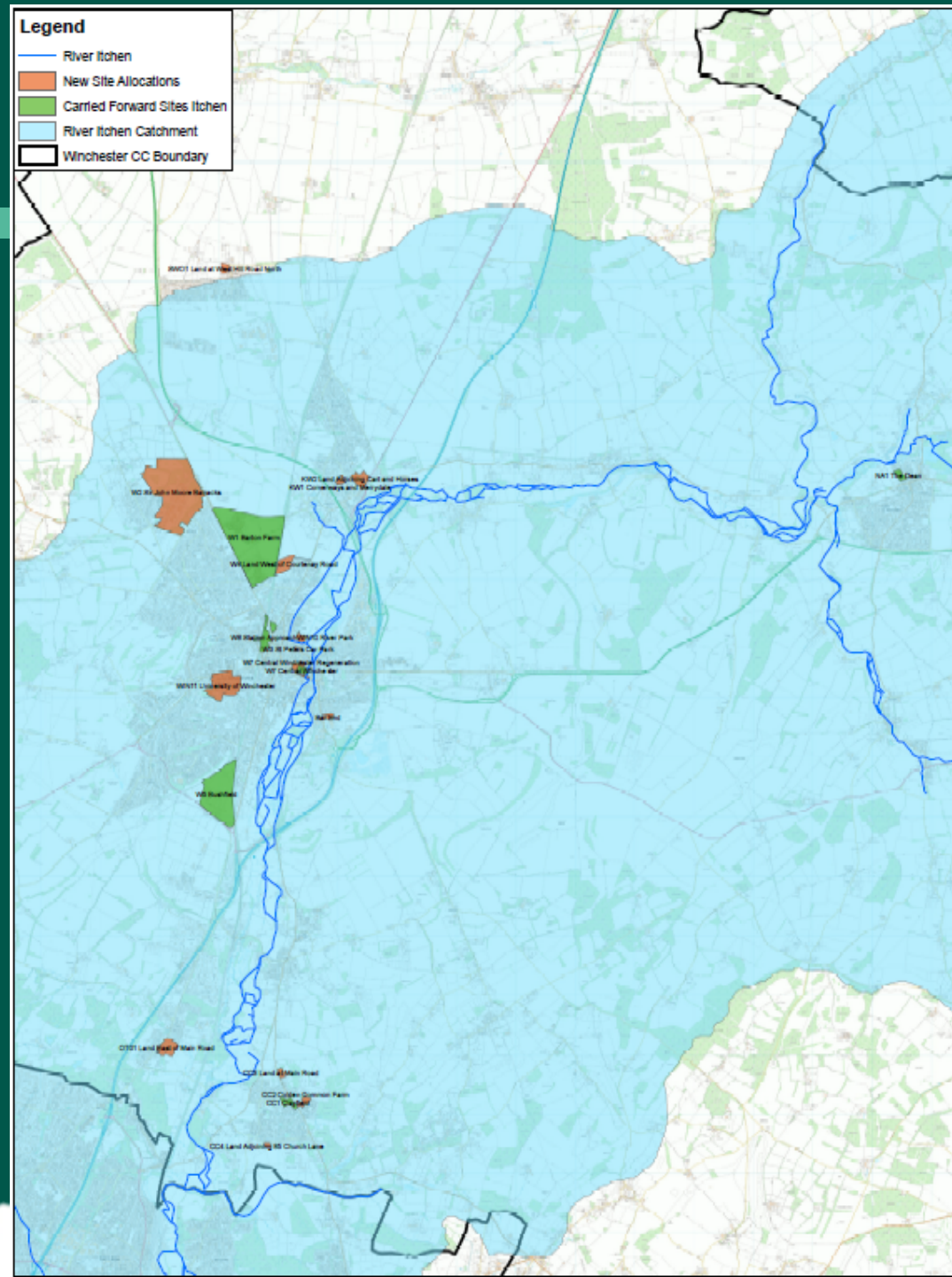
# Consultation responses

## Evidence Base

Evidence Base	Number of comments to analyse
IIA	30
Settlement Hierarchy	19
SHELAA	13
Development Strategy and Site Selection	10
Public Consultation	7
Future Local Housing Need and Population profile assessment	4
HRA	2
Sustainability appraisal	3
Windfall assessment report	2
Local Plan transport assessment stage 1 report	3
Winchester City Council playing pitch strategy and action plan	2
Green Infrastructure framework	1
Winchester District Strategic Housing Market Assessment	1
Interim Position Statement of student accommodation in Winchester to inform local on 2038	1
HCC Air quality framework	1
Interim Position Statement of student accommodation in Winchester to inform local on 2038	1
Local Plan Viability Assessment	1
Employment Land Study	1
<b>Total</b>	<b>102</b>

Evidence Base not commented on	
Green Economic Development Strategy	0
Gypsy and Traveller Accommodation Needs Assessment	0
LETI Net Zero Energy Target Report	0
Local Plan Design South East workshop reports	0
Natural England – GI mapping	0
Retail, Leisure and Town Centre Study	0
Review of the need for nutrient neutral development in the Budds Farm Wastewater treatment works	0
Winchester City Council Landscape Character Assessment	0
Winchester City Council Open Space Assessment	0
Winchester Movement Strategy	0

Nutrients – sites that fall within the Rover Itchen catchment area



- We are currently working with PfSH and others, to identify a nutrient budget for the LP and solutions on how we can address the issue of nutrients before we can proceed to the Reg 19 stage;
- We will be shortly contacting site promoters that have their sites allocated in the Reg 18 LP and asking them demonstrate the deliverability of their sites and how they intend to address nutrients; and
- It has become clear that we will need a combination of measures to address the issues of phosphorus as it is more complicated than nitrates.



## Proposed changes to the NPPF

- Consultation closed on 2 March 2023
- Asked for a response to 57 questions
- A response has been submitted from the Cabinet Member for Place and the Local Plan
- Key point was that housing still is established by the standard method as the starting point... but exceptional circumstances relating to character of areas might justify a different approach.

